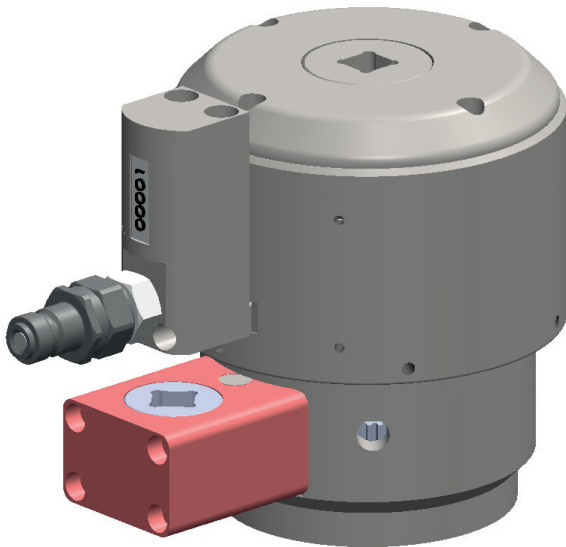


## SERIES: **mono** ■ Single-stage Tensioners

**IN STOCK FOR  
QUICK DELIVERY**



### LATEST TECHNOLOGY

- Latest seal technology
- High cycle life
- Optimised load to weight ratio
- Integrated system with TensionPro pumps and hoses

### SAFE AND RELIABLE

- CE marked
- Over-stroke protection
- Max stroke indicator
- Pressure Test Certification
- Full colour operating and safety manual

### OPTIONS AND FEATURES

- Special threads
- Special load requirements
- Twin or single port
- Protective handle
- Special bridge for tight clearance
- Swivel connections
- Cycle counter
- Gear drive nut run-down
- Spring piston return
- Misalignment compensation
- ARMOURMAX anti-corrosion, anti-wear

**mono** series single-stage tensioners are versatile and reliable hydraulic bolt tensioners suitable for high load and tight space applications with limited overhead clearance. Optimised for use on **wind turbines** they have been designed for long-life, low-maintenance use, and are suitable for use on single bolts, or grouped together for multiple tightening of bolted joints. **single** tensioners are extensively used for slewing rings, power-gen applications, structural and all critical bolting.

### PROCESS IMPROVEMENT

**mono** Hydraulic Tensioners are designed for **speed**. Fast spring piston retract, geared nut run-down and spring located sockets, improve process time on each tensioning operation. High cycle life, over-stroke protection and the latest seal technology ensure **low maintenance** operation to keep projects on schedule.

| Bolt Thread Size |        | Maximum Tensioner Load |      | Tool Height | Tool OD |
|------------------|--------|------------------------|------|-------------|---------|
| T                |        | F                      |      | H           | A       |
| inch             | Metric | tonf                   | kN   | mm          | mm      |
| 1                | M24    | 29.1                   | 290  | 100         | 85      |
| 1 1/8            | M27    | 38.1                   | 380  | 105         | 90      |
| -                | M30    | 46.8                   | 466  | 110         | 100     |
| 1 1/4            | M33    | 57.2                   | 570  | 115         | 110     |
| 1 3/8            | M36    | 68.0                   | 678  | 120         | 118     |
| 1 1/2            | M39    | 81.3                   | 810  | 125         | 124     |
| 1 5/8            | M42    | 93.3                   | 927  | 135         | 130     |
| 1 3/4            | M45    | 108.8                  | 1082 | 140         | 145     |
| 1 7/8            | M48    | 122.7                  | 1223 | 145         | 150     |
| 2                | M52    | 146.0                  | 1455 | 150         | 160     |
| 2 1/4            | M56    | 168.1                  | 1675 | 155         | 170     |
| -                | M60    | 195.7                  | 1950 | 160         | 178     |
| 2 1/2            | M64    | 225.3                  | 2245 | 165         | 185     |

### SAFETY AND SPEED

Optional durable handle intergrated over the hydraulic connection for easy handling and positioning of the tool, protects the hose and inlet connection from unnecessary loading - benefiting the operator with an extra layer of safety.

